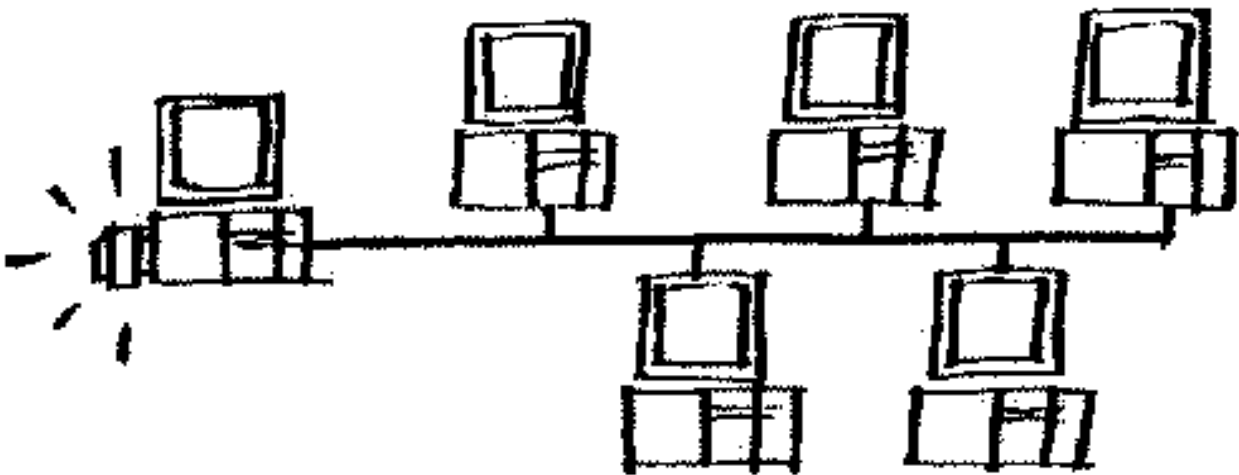


VenturiOne

Getting Started...

Network DK2 DESkey Installation Guide



AppliedCytometry
Pioneering Software Simplicity



CONTENTS

1	DK2 Network Server Overview	2
2	DK2 Network Server Installation	3
2.1	To Install DK2 Network Server Onto A Host PC:.....	3
2.2	Verifying server installation.....	6
2.3	DK2 Network Server Remote Monitor	6
2.3.1	Verifying server installation.....	7
2.3.2	Admin Button	8
3	Client PC DK2Driver Installation	10
4	DESkey Control Panel Configuration	14
4.1	DK2/38 Tab.....	14
4.2	Networking Tab.....	16
4.3	File Versions Tab.....	18

1 DK2 Network Server Overview

This manual deals with the installation of the DK2 multi-user network server option for enabling access to VenturiOne application software.

If you have a network or IT manager for your network site, you must consult them before proceeding with a DK2 network server installation.

The DK2 Network Server runs as a service on the machine to which a network compatible DK2 is attached, and provides the communications interface between the remote client applications and the DK2. This enables a single DK2 to service a network of workstations, which would otherwise require separate keys on each machine. The maximum number of concurrent users is programmed into the DK2 DESkey hardware and corresponds to the number of licences purchased. The maximum number of concurrent users logged-in to VenturiOne at any one time will not be allowed to exceed this number.

The DESkey USB device can be updated remotely for more concurrent users upon request. To purchase more licences, please contact Applied Cytometry.

The Multi-User Network DK2 DESkey must be plugged into the USB port of a network "Host PC" and the PC must be switched on at all times during which other VenturiOne software users wish to log-in and use the VenturiOne software.

The server host requires installation and configuration of the DESkey Network Server system supplied on the VenturiOne Support CD. All the client PC system(s) use updated common drivers also supplied on the VenturiOne Support CD supplied.

2 DK2 Network Server Installation

The server Host PC is the PC into which the Network DK2 DESkey device will be plugged into, this PC must have the DK2 server service and drivers running.

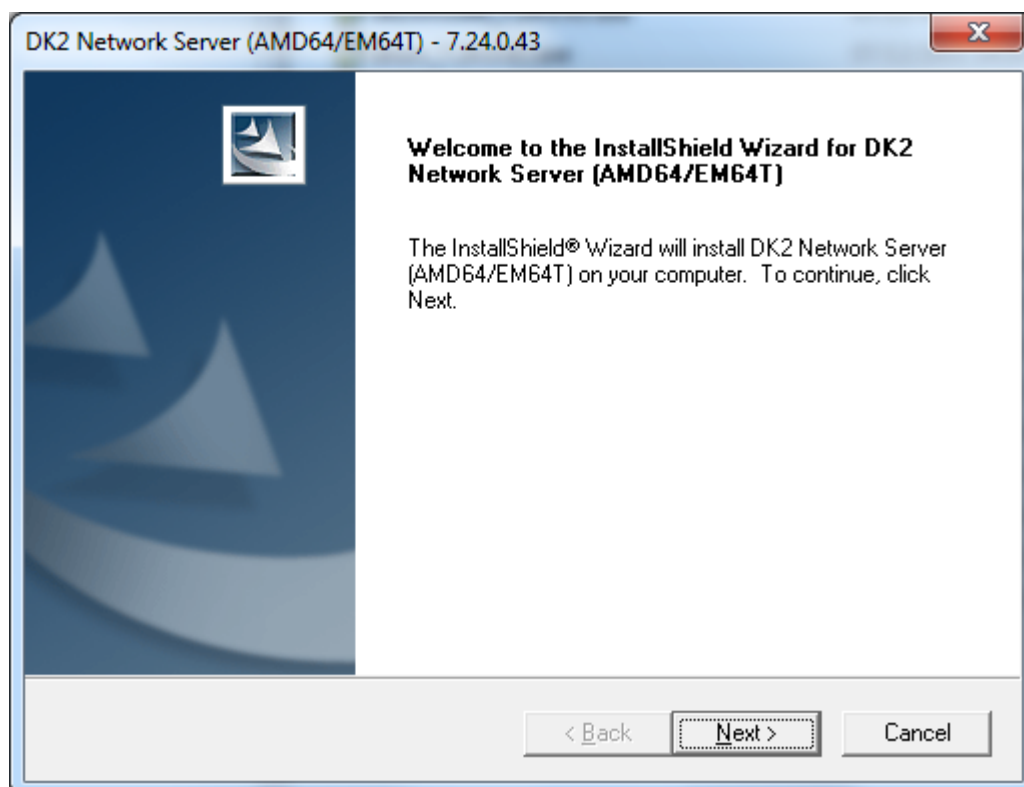
If there are previous versions of DESkey drivers loaded on any of the PCs, it is recommended that the Windows **Control Panel / Programs and Features** facility is used to remove registered DESkey components before starting the server installation process.

2.1 To Install DK2 Network Server Onto A Host PC:

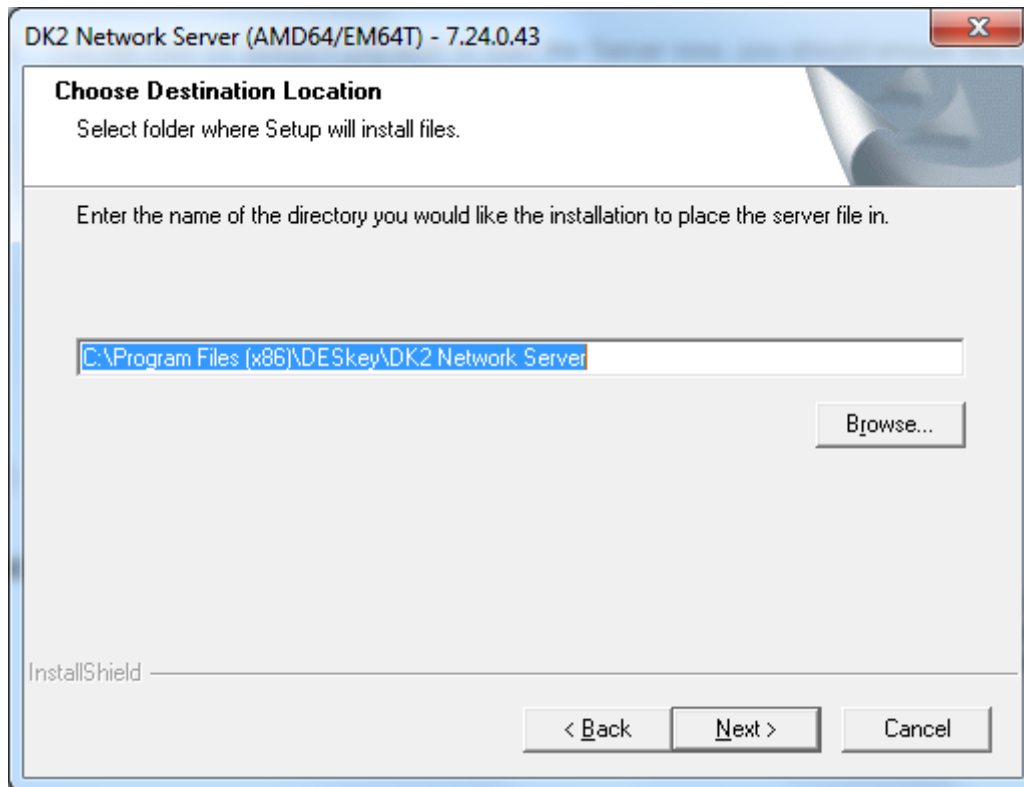
- 1) Insert the VenturiOne Support CD into the CD-Rom drive.
- 2) Use explorer or browse the CD via the **Start/Run** command and **Browse** to locate the **Network** folder on the CD rom. Then browse to the **Server** sub folder. Run the **dnsrv_7.24.0.43.exe** file.

! *If your system administrator requires use of WHQL certified drivers, these are located in the Network / WHQL_server folder. The WHQL drivers are not compatible with Windows 7.*

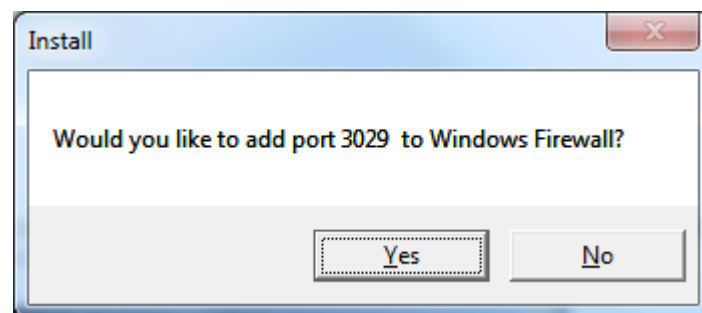
- 3) When prompted with the User Account Control message select **Yes** to continue installation.
- 4) The **DK2 Network Server** dialog will be shown after a short while with some introductory information. Click **Next** to proceed.



- 5) The **Choose Destination Location** dialog will be shown next, it is advised that you accept the destination offered, but you can change the destination folder if you wish. Click **Next** to proceed.



- 6) The network server requires port 3029 to be added to the firewall to allow communication with client devices; the installation software can do this automatically, when prompted with the Install message box asking **“Would you like to add port 3029 to Windows Firewall?”** Select **Yes**. If you select **No** the server system may fail to work.



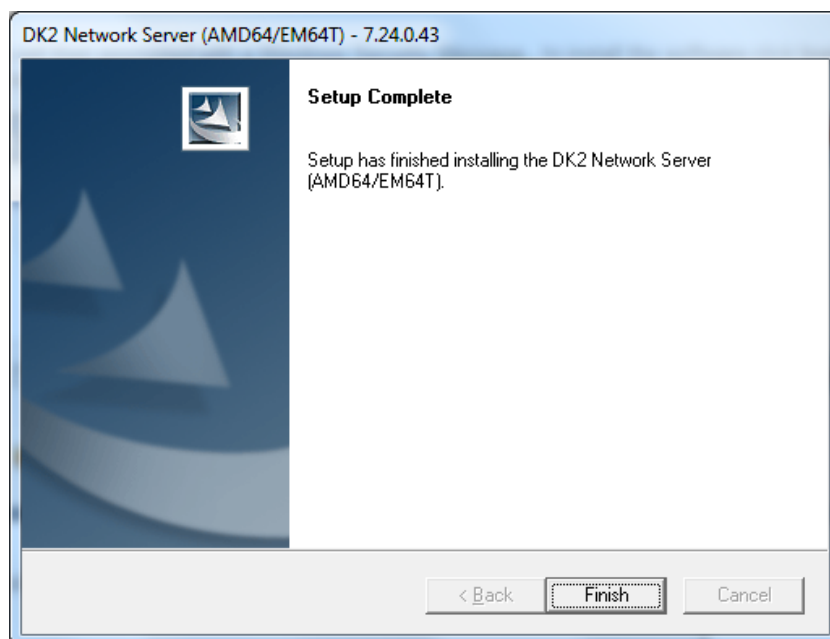
- 7) You will then be prompted with a Windows Security Message, to install the software click **Install**. To cancel installation of the server software click **Don't Install**.



- 8) Installation of the server software then begins and the following message is displayed;



- 9) A **Setup complete** message will be displayed once installation of the server software has finished – Click **Finish** to exit the wizard.



Installation of the server is now complete, now insert the DK2 USB device into a free USB port and wait for detection and final installation of the device to complete.

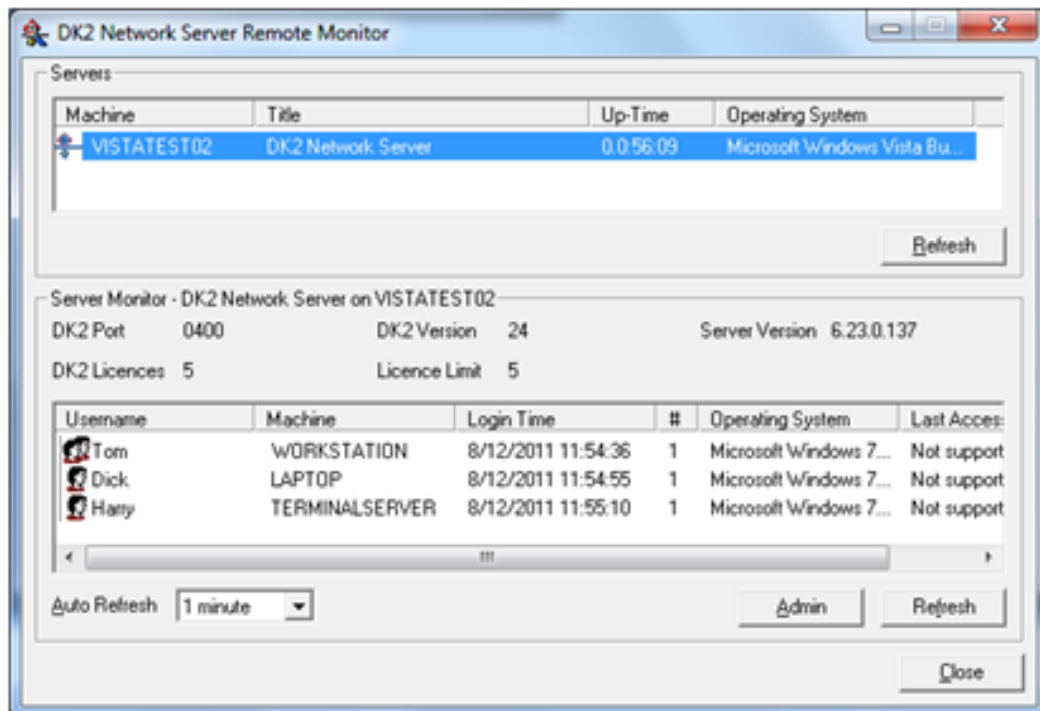
2.2 Verifying server installation

To check the operation of the server software select **DK2 Network Server / DK2 Network Server Monitor** as described in section 2.3.1.

! If you wish to run the VenturiOne software on the Server PC please see DK2 Access method described in section 4.1.

2.3 DK2 Network Server Remote Monitor

The DK2 Network Server Remote Monitor can be used to configure and monitor any of the servers listed in the Networking section of the DESkey Control Panel.



When launched, the monitor will query each machine listed in the control panel and retrieve information on any servers running. The basic information includes the I/O address of the DK2 being used, the version of the DK2 and of the server software and the DK2 license information. Additionally, a list of users currently logged in will be displayed.

The icon associated with each user will be one of the following:



Indicates the client is accessing the server with a workstation license. The fourth column indicates the total number of active connections.

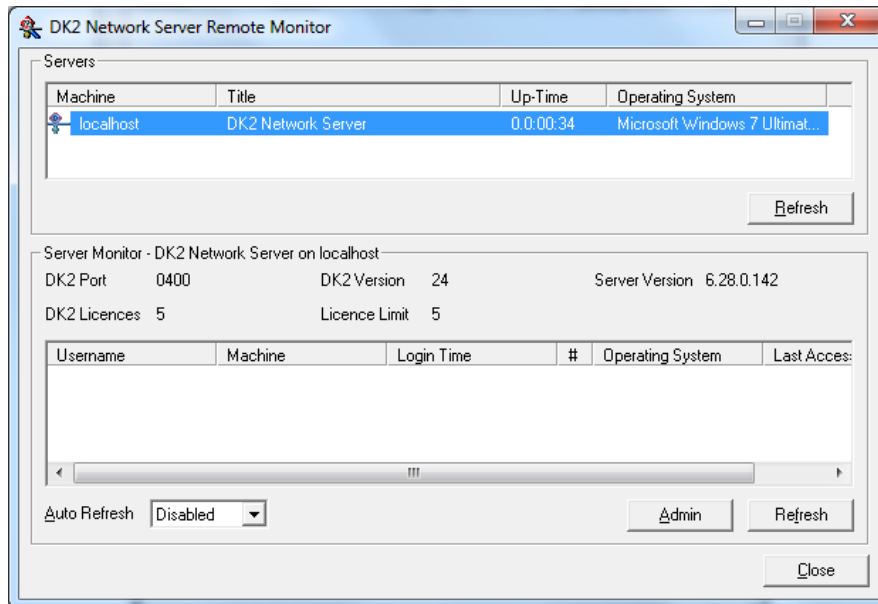


Indicates the client is accessing the server with a process license. This is the way VenturiOne software will access the server.

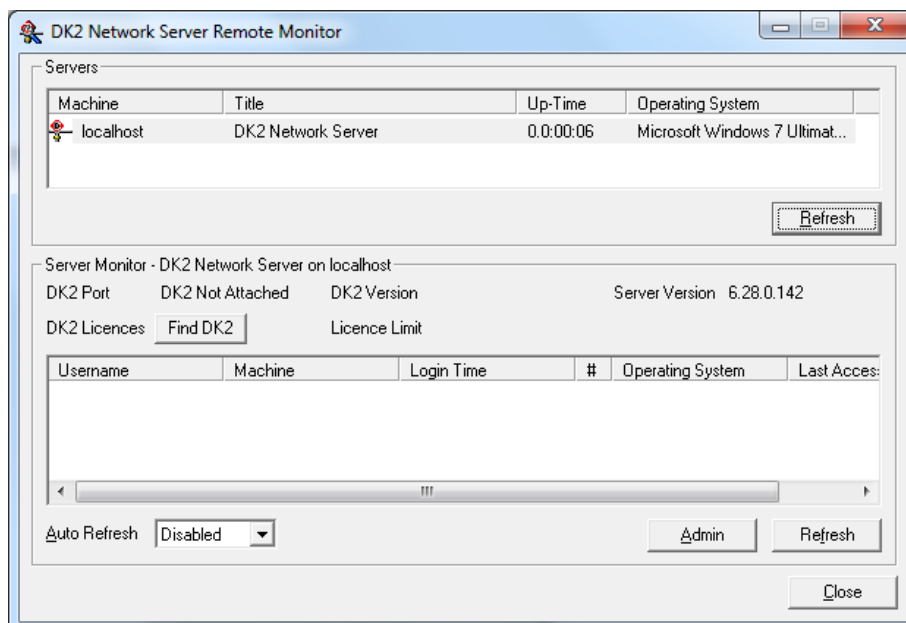
The two Refresh buttons control the refreshing of the two screens listing the servers and users of the selected server. The Auto Refresh option will control how often the user list is updated but the server list will require manually refreshing to update the list.

2.3.1 Verifying server installation

To check the operation of the server software select **DK2 Network Server / DK2 Network Server Monitor**. The dialog should list the current server and show the number of licences available; the example illustrated below has 5 licences available on a 5 user server.



If the DK2 Network server displays **DK2 Not Attached**, remove then re-insert the USB DESkey device.

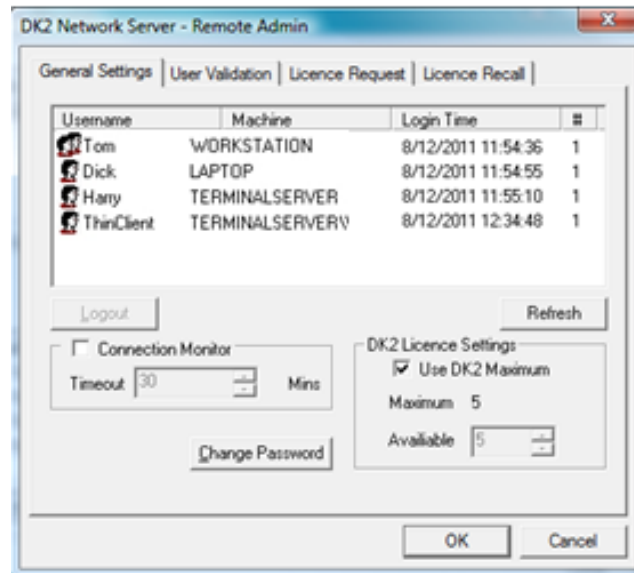


Click the **Find DK2** button to redetect the DESkey device, the updated server information should now be displayed on the dialog.

If your server is not listed you may need to start or restart the service as described in section 4.2.

2.3.2 Admin Button

The **Admin** button will launch the administration window and allow server settings to be modified. The server password is required to administer the server. By default, this password is "deskey" but can be set to any value required from the administration window.



2.3.2.1 General Settings tab

On the General page the following server properties can be modified:

Connection Monitor

This value specifies the maximum length of idle time the server will expect from any user. If the user has not accessed the server in this period they will be automatically logged off from the server, the user will not be logged out of the VenturiOne software and the software will automatically request a new license when required.

This feature is useful if certain PCs or users are tying up a license, the connection monitor will ensure optimum use of available licenses.

DK2 Licence Settings

This value allows a user definable limit to be placed on the number of available users licenses in the DK2 Network Server. This limit can be configured to a maximum of the licenses count in the DESkey or 255, whichever is less.

Logout

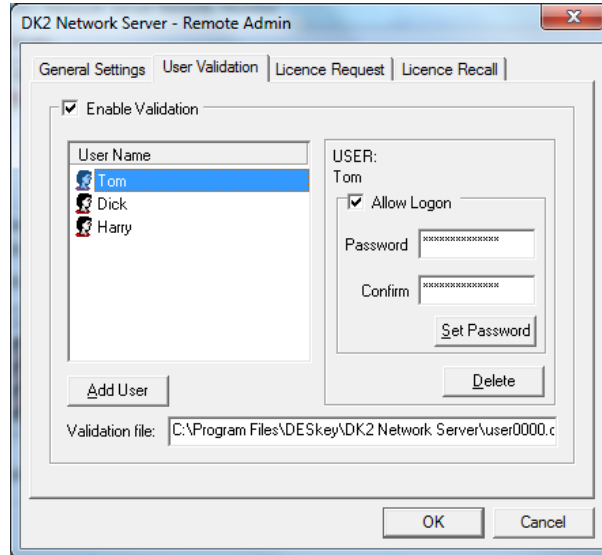
If a user is selected, the option to force their logout from the server is available. The user will not be warned when they are logged out from the server. This can be used in place of the connection monitor to be more selective when removing users. The user will not be logged out of the VenturiOne software and the software will request a new license when required.

Refresh

This will refresh the monitor window with the latest information from the server.

2.3.2.2 User Validation tab

The DK2 Server Monitor is also used to configure the User Validation of the DESkey Network Server. When enabled, only users entering the correct username and password will be granted access.

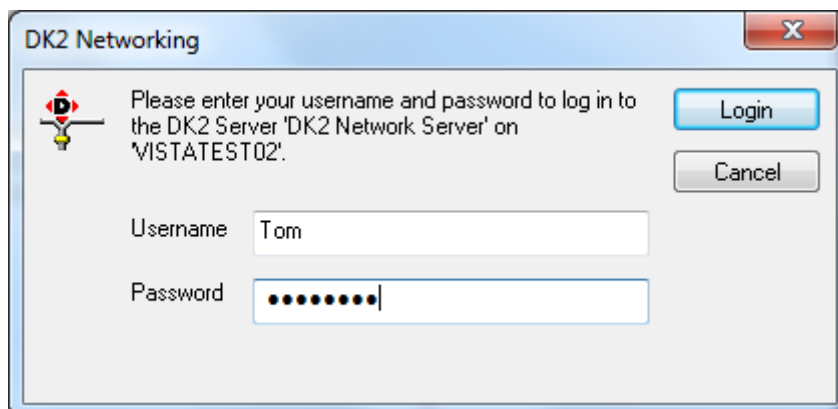


Once added, options allow users to be either disabled or deleted. A user can be disabled by unchecking the 'Allow Logon' box. A user can be deleted by selecting the 'Delete' button. Any changes made to the user validation options will not be applied to the server until the 'OK' button has been clicked.

The validation file is stored on the server currently being monitored.

The user's login password can be changed at any time by entering the new password into both the 'Password' and 'Confirm' boxes and by clicking 'Set Password'.

If enabled, any user trying to access the server will be prompted to enter his or her username and password as shown in below;

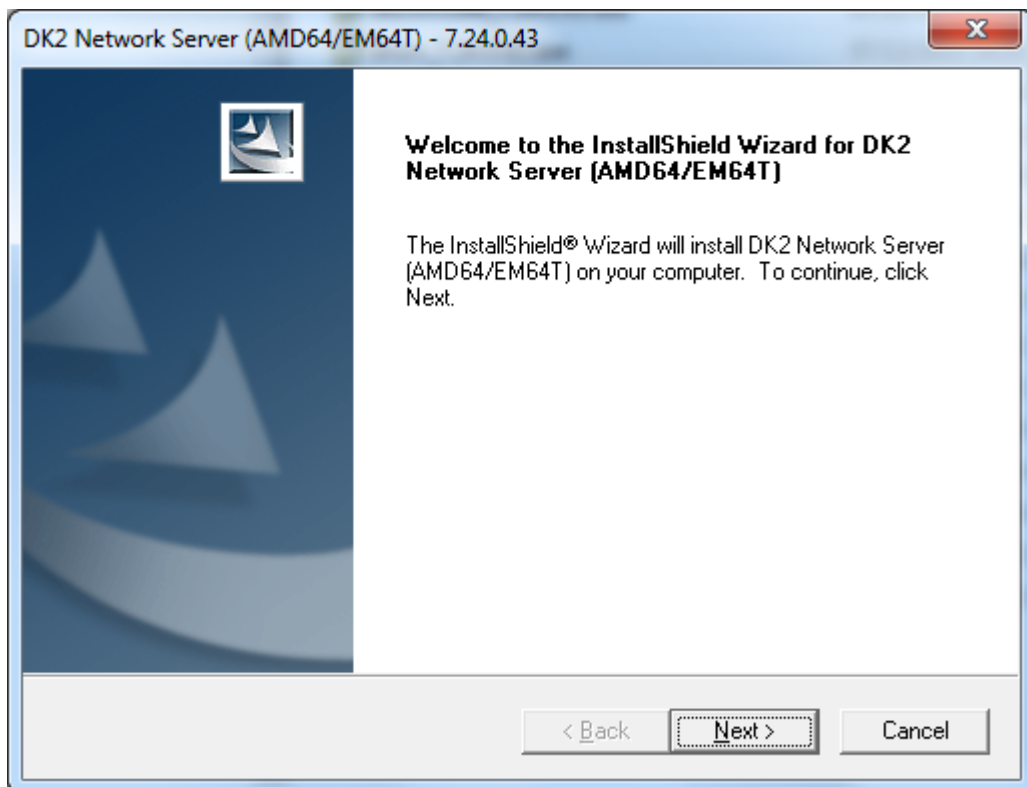


3 Client PC DK2Driver Installation

- 1) Install VenturiOne software as described in the **VenturiOne Installation Guide**.
- 2) Insert the VenturiOne Support CD into the CD-Rom drive.
- 3) Use explorer or browse the CD via the **Start/Run** command and **Browse** to locate the **Network** folder on the CD rom. Then browse to the **Client** sub folder. Run the **dk2wn3264_7.24.0.43.exe** file.

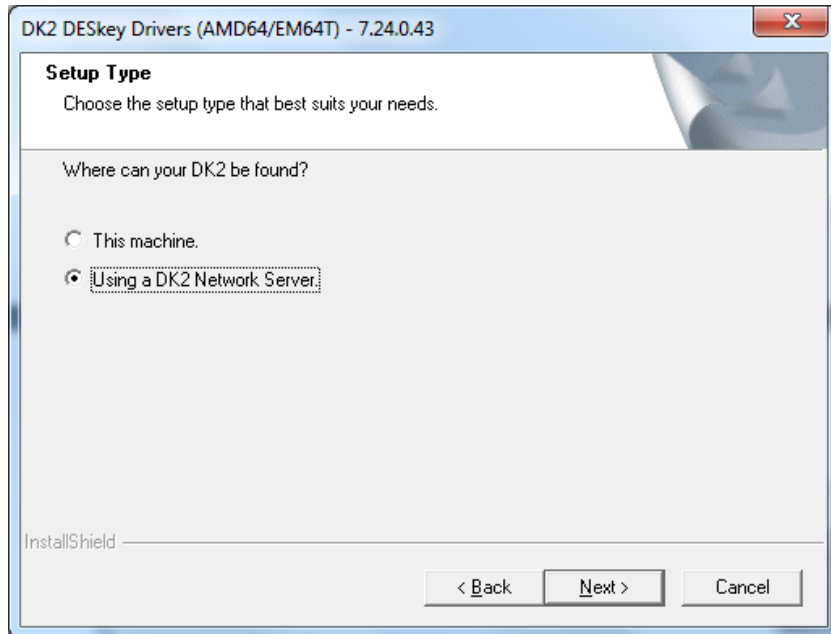
! If your system administrator requires use of WHQL certified drivers, these are located in the **Network / WHQL_client** folder. The WHQL drivers are not compatible with Windows 7.

- 4) When prompted with the User Account Control message select **Yes** to continue installation.
- 5) The **DK2 Network Server** dialog will be shown after a short while with some introductory information. Click **Next** to proceed.



- 6) A **Setup Type dialog is displayed** allowing the choice of where the DESkey USB device is located. When using the DK2 Server system select the **Using a DK2 Network Server.**

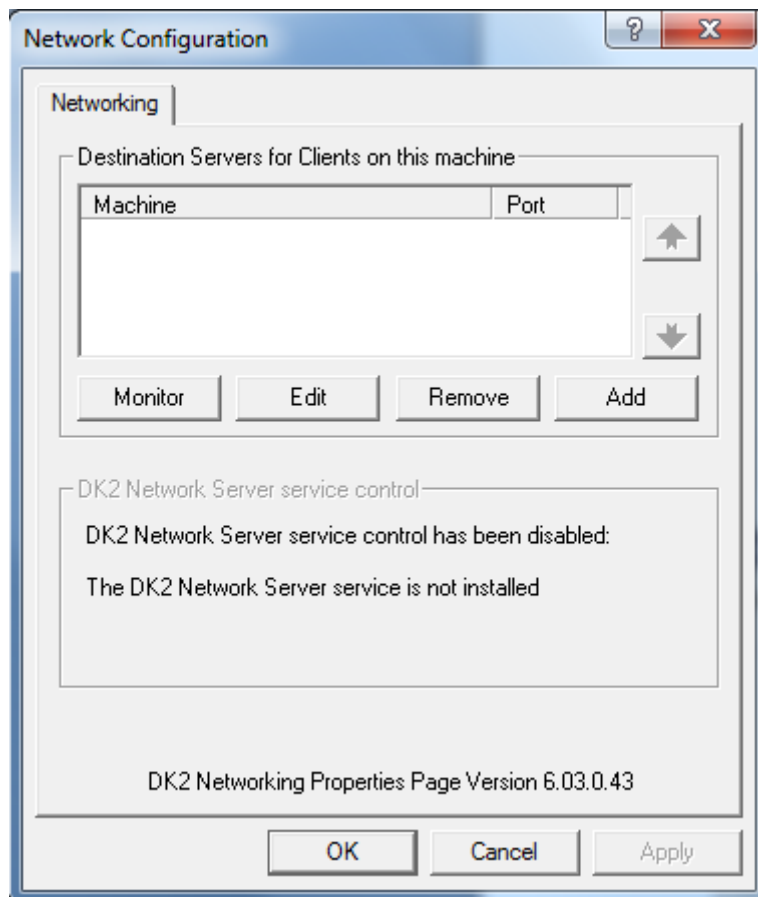
Click **Next** to proceed.



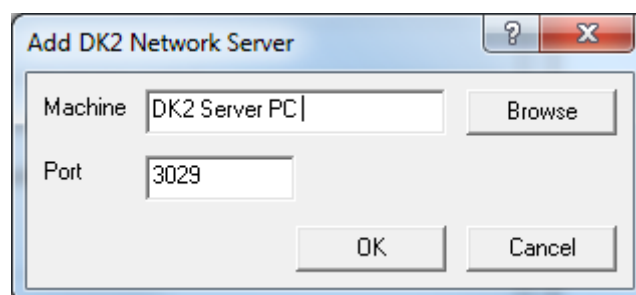
- 7) DK2 DESkey drivers will now be installed and the following message displayed.



- 8) The **Network Configuration** dialog will be shown next. The PC on which the Network Server DESkey device is installed must be added to the “Destination Servers” list. Select **Add** to select the DK2 network server PC.



- 9) The **Add DK2 Network Server** dialog will appear.



Use the Browse button to locate the server PC, or type in the name of the server PC.

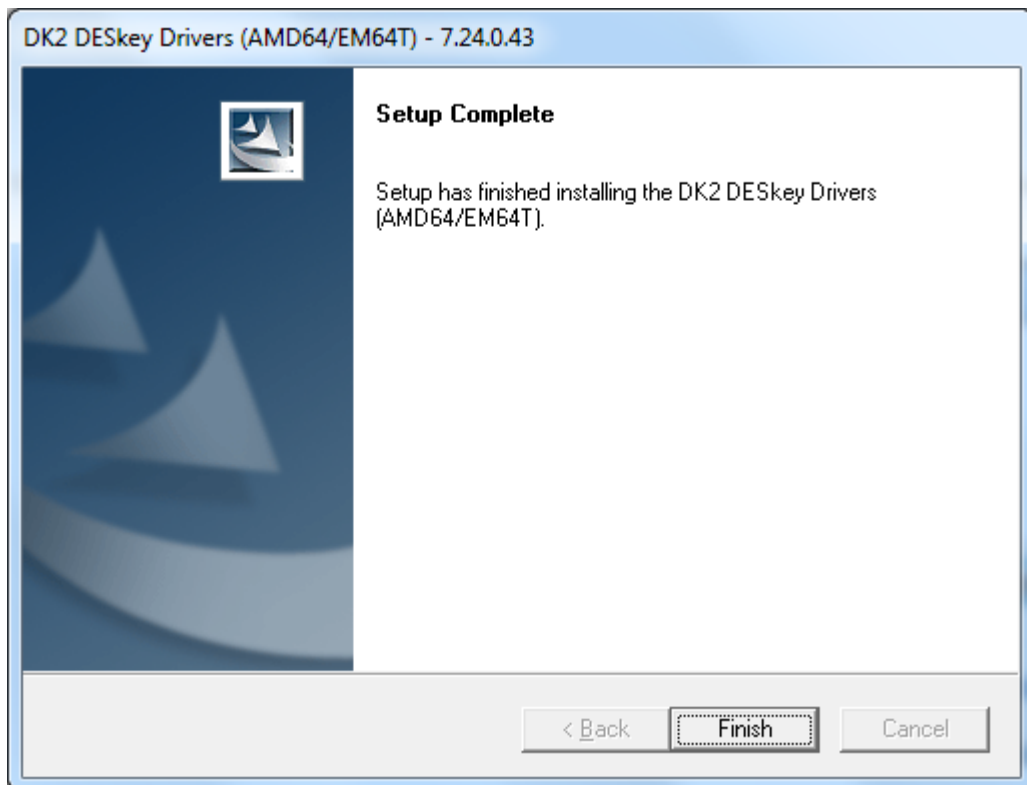
Click **OK** when the server name has been added.

The DK2 server Port used defaults to Port 3029. Please consult your network administrator before changing this value.

Click OK to close the Network Configuration dialog and complete installation of the driver. A Windows Security message may be displayed; Select Install to complete installation of the driver.



10) The **Setup Complete** message will now be displayed, select **Finish** to complete the installation process.

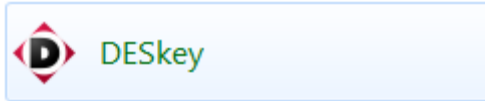


11) Run VenturiOne software and it should be authorised to run via the remote DESkey Network Server.

12) For further information regarding DESkey Control panel functions, please refer to section 4.

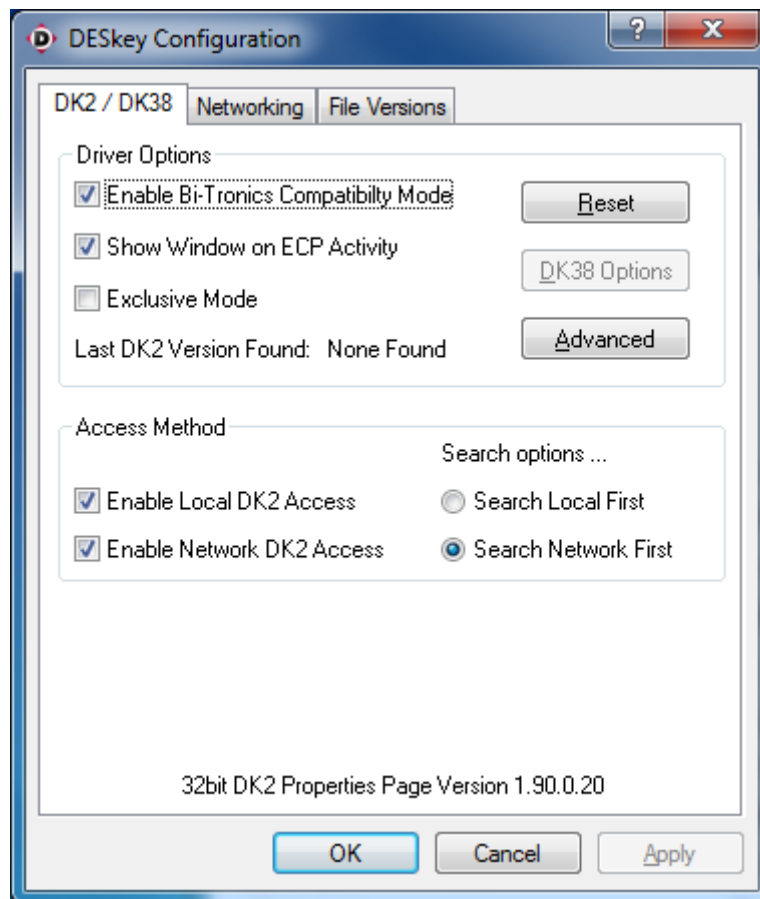
4 DESkey Control Panel Configuration

The **DESkey Configuration** control panel item provides a useful means of setting up the driver defaults and access priorities and may be accessed by clicking on the DESkey icon in the system Control Panel.



The installation programs will automatically configure the DK2 driver for optimal performance. If you are experiencing difficulty you should verify that these settings are correct.

4.1 DK2/38 Tab



Bi-Tronics Compatibility Mode

If the DESkey device is connected to a parallel port which supports the “Bi-Tronics” mode then this option must be checked to prevent problems with printing through the DESkey.

Show Window on ECP Activity

Select whether to show a message window indicating activity on an ECP parallel port.

If there is activity on an ECP port the DK2 cannot be accessed and the driver will temporarily wait until the port becomes free. During this period the software accessing the DK2 will not function. The message window indicates that the software has halted and allows the DK2 access to be cancelled. **Warning:** Cancelling may cause the software to fail.

Exclusive Mode

This option is only available under Windows NT and will disable system multitasking during all communications with the DK2 driver.

The performances of background applications can be affected so only select this option if you are experiencing device conflicts.

Reset

This button will reset all the driver delays to zero so that they will all be recalculated during the next time a search for the dongle is performed.

Advanced Button

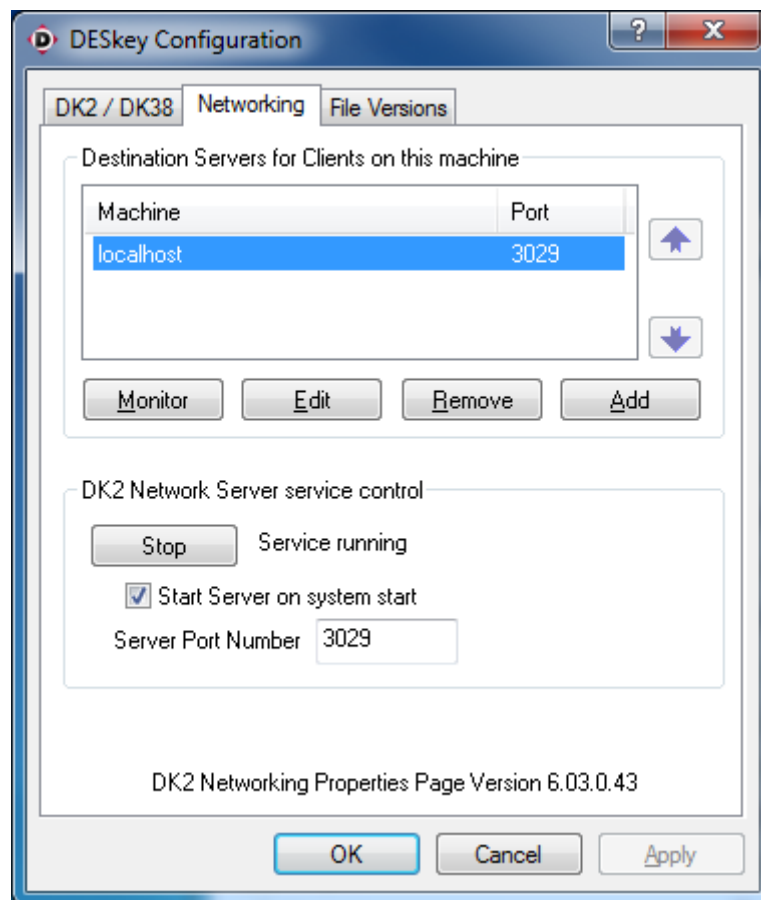
Contains options only relevant to Parallel DK2 devices, these options have no effect on USB devices.

DK2 Access Method

These options control where the driver will search for the DK2. If both Local and Network Access are enabled then the Search Options will control the search order.

If you wish to run VenturiOne software on the server PC you must enable Network Access and select **Search Network First**, or disable the **Enable Local Access option**.

4.2 Networking Tab



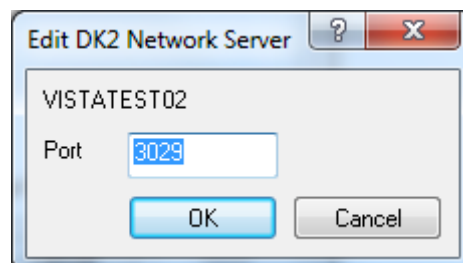
This list shows the available Network Servers available to access the Network DK2.

Monitor

Select this option to open the DK2 Server Monitor utility described in section 2.3.

Edit

Allows the modification of the Port used by the DK2 Server, Port 3029 is the default value and should only be changed in consultation with your network administrator.

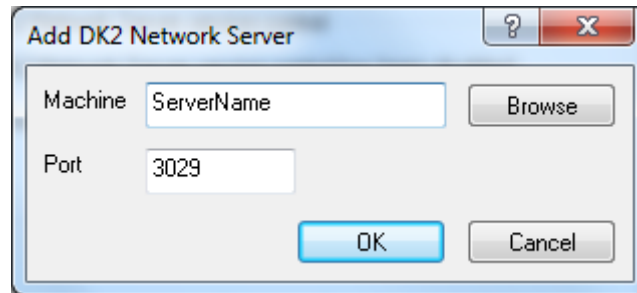


Remove

Allows the removal of a DK2 Network server from the list of available servers. Highlight the server to remove then click the Remove option.

Add

Allows the addition of a new DK2 Network server to the list of available servers. Enter the machine name or browse to available DK2 server PCs.



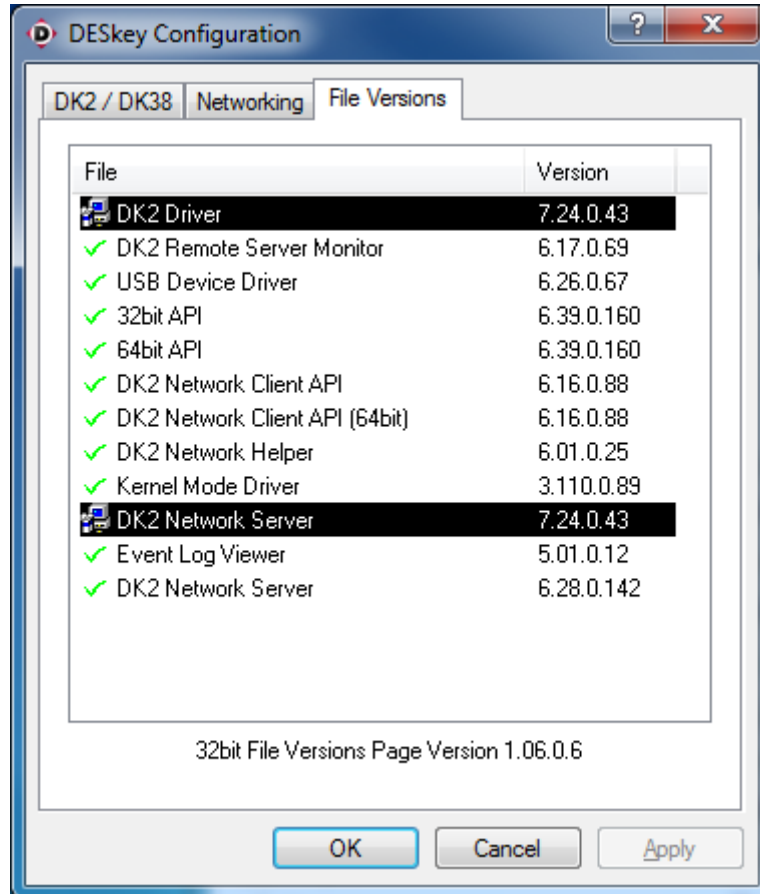
DK2 Network Server service control

Displays the current status of the DK2 Server service, the service must be running for the server to function. If a problem occurs with the server, stopping then starting the service may solve the problem.

The Start Server on System Start checkbox should be enabled and will automatically start the DK2 network service when the server PC is running. If this is unchecked then the service will have to be manually started each time the server pc is powered up.

4.3 File Versions Tab

The Driver File Versions window provides information about the installed drivers. If a “green tick” appears beside the file name then the version number is correct, if a “red cross” appears beside the file name then the version number is incorrect and should be updated, contact Applied Cytometry for an updated driver.



The Driver File Versions window provides information about the installed drivers. If a “green tick” appears beside the file name then the version number is correct.

30th January 2012